





Revolutionizing Outdoor Rugs with Superior Quality and Eco-Friendly Design

EXTOR CARPETS is a dynamic, forward-thinking company established by Rudolf Mennes, a third-generation Belgian carpet producer. With years of experience in the sales department, Rudolf observed a growing demand for outdoor rugs. He identified a gap in the market: affordable options often compromised on quality, while premium products came with a hefty price tag. Driven by a vision to create the most durable outdoor rugs at a fair price, Rudolf set out to develop a superior product.

Environmental responsibility is a cornerstone of this vision. That's why all Extor carpets are crafted from recycled PET, reflecting a commitment to sustainability. Combined with local production in Belgium, this makes Extor Carpets truly unique in its segment.

Today, Extor Carpets operates globally, offering outdoor rugs up to 4 meters wide in any shape or dimension, meeting the diverse needs of customers worldwide.

THE ROYAL COLLECTION

This collection features four distinct lines: Victoria, Maxima, Mathilda, and Elizabeth. Each line is crafted with the highest quality materials, reflecting the durability and elegance that Extor Carpets is known for. Our outdoor carpets are designed to stand the test of time, offering both exceptional resilience and aesthetic appeal. With a

perfect blend of traditional craftsmanship and modern design, these carpets enhance any outdoor space, ensuring long-lasting performance and style.



MATHILDA

Beige- E200E0201





MATHILDA

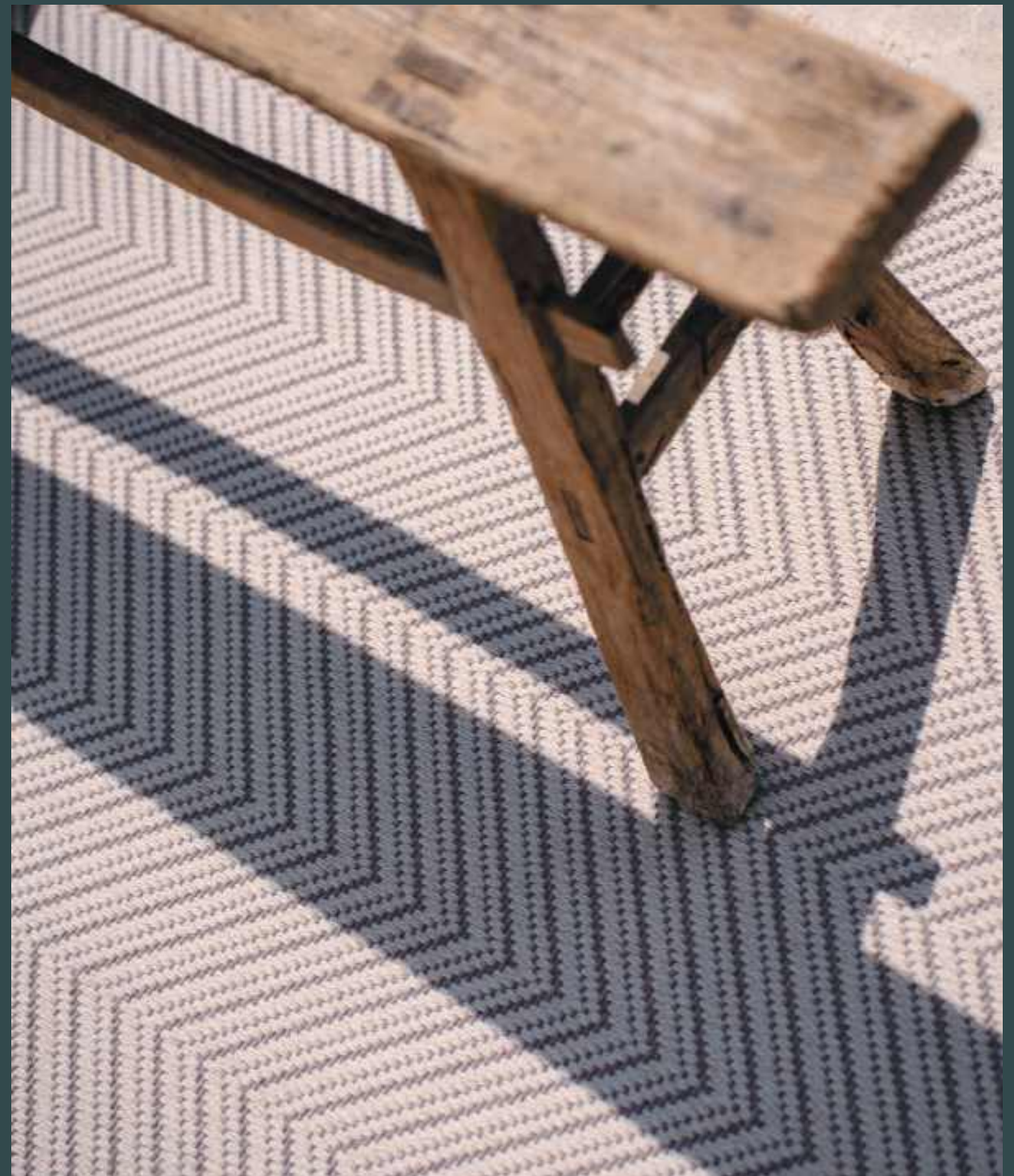
Mathilda White- E200E0102





MATHILDA

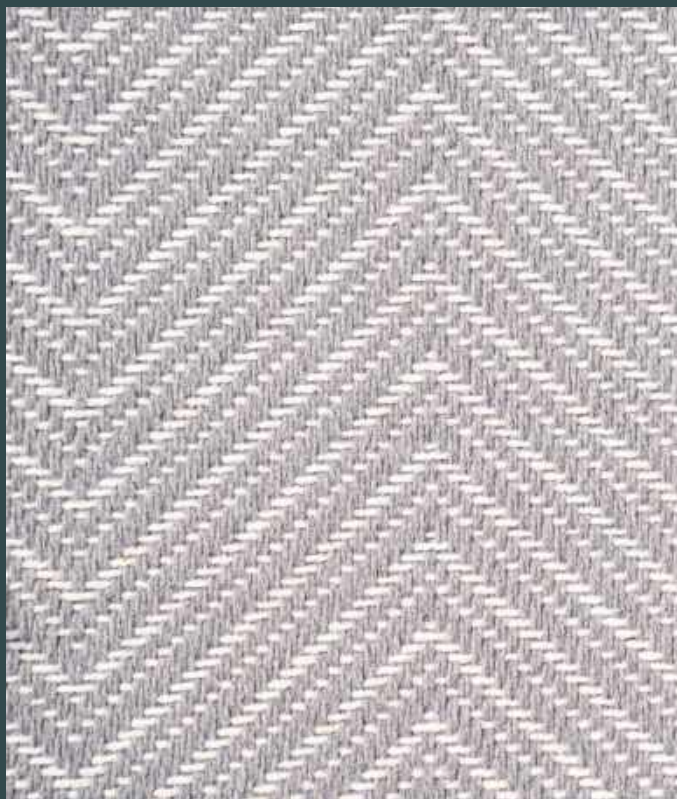
White-Brown - E200E0103





MATHILDA

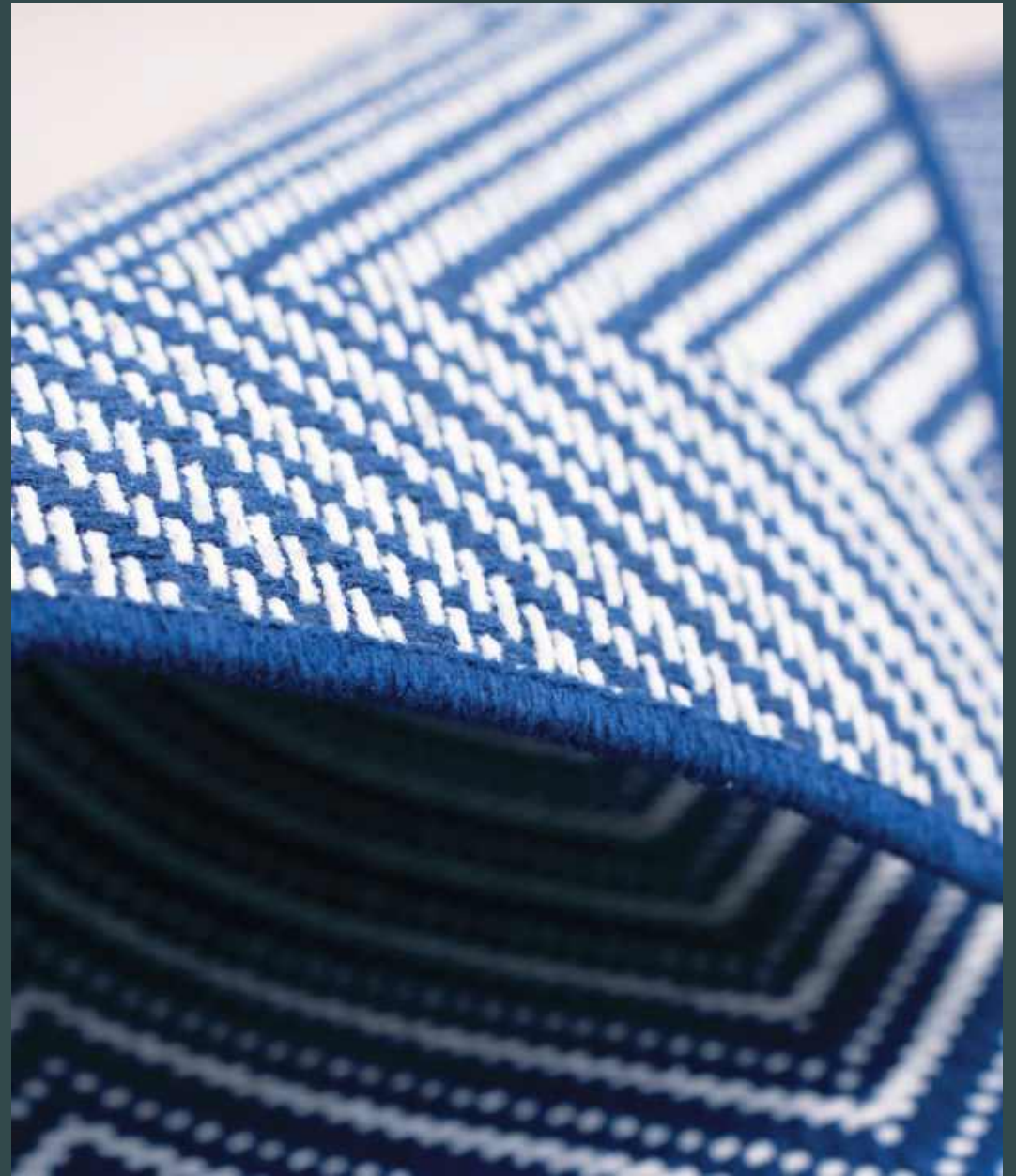
Lightgrey - E200E0601





MATHILDA

Mathilda Blue - E200E0401





MATHILDA

Dark Grey - E200E0605





MATHILDA

Brown - E200E0203





MATHILDA

Beige - E200E0201



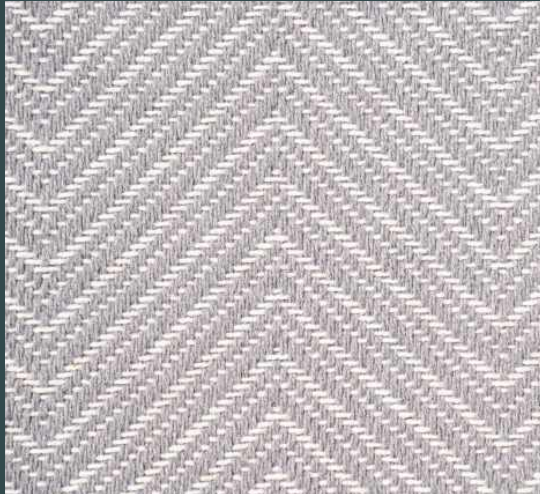
Mathilda White - E200E0102



White-Brown - E200E0103



Lightgrey - E200E0601



Mathilda Blue - E200E0401



Dark Grey - E200E0605



Brown - E200E0203



SPECIFICATIONS



Made out of 100% recycled pet yarn material and made in Belgium



Suitable for stairs



Dimensional stability and easy to clean



Waterresistant, indoor and outdoor use



Finished with matching yarn or board



UV treated +1000h



Production 4m and every size or shape



Suitable for chairs with wheels



Suitable for floorheating, fire classification CFL-s1



Suitable for pool areas: grey scale rating: 5 (excellent)



Classification 23/33; suitable for heavy domestic and commercial use (hotels,office)

" Each carpet can be custom-finished to meet your specifications. The maximum width is 4 meters, and any shape is possible. We provide precision finishing down to the centimeter. Additionally, there is the option to finish with either yarn or an edge binding, depending on your preference."

TECHNICAL INFORMATION:

MANUFACTURING METHOD
FLATWOVEN

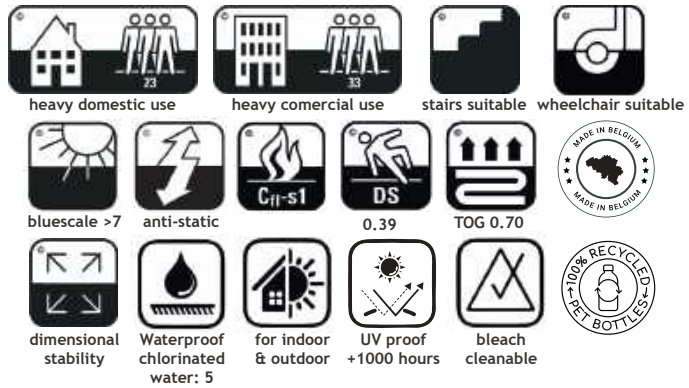
MANUFACTURING WIDTH
4,00 m

PILE COMPOSITION
100% recycled PET (indoor/outdoor use)

TOTAL THICKNESS
+ - 4.4mm

TOTAL CARPET WEIGHT
2050g/m²

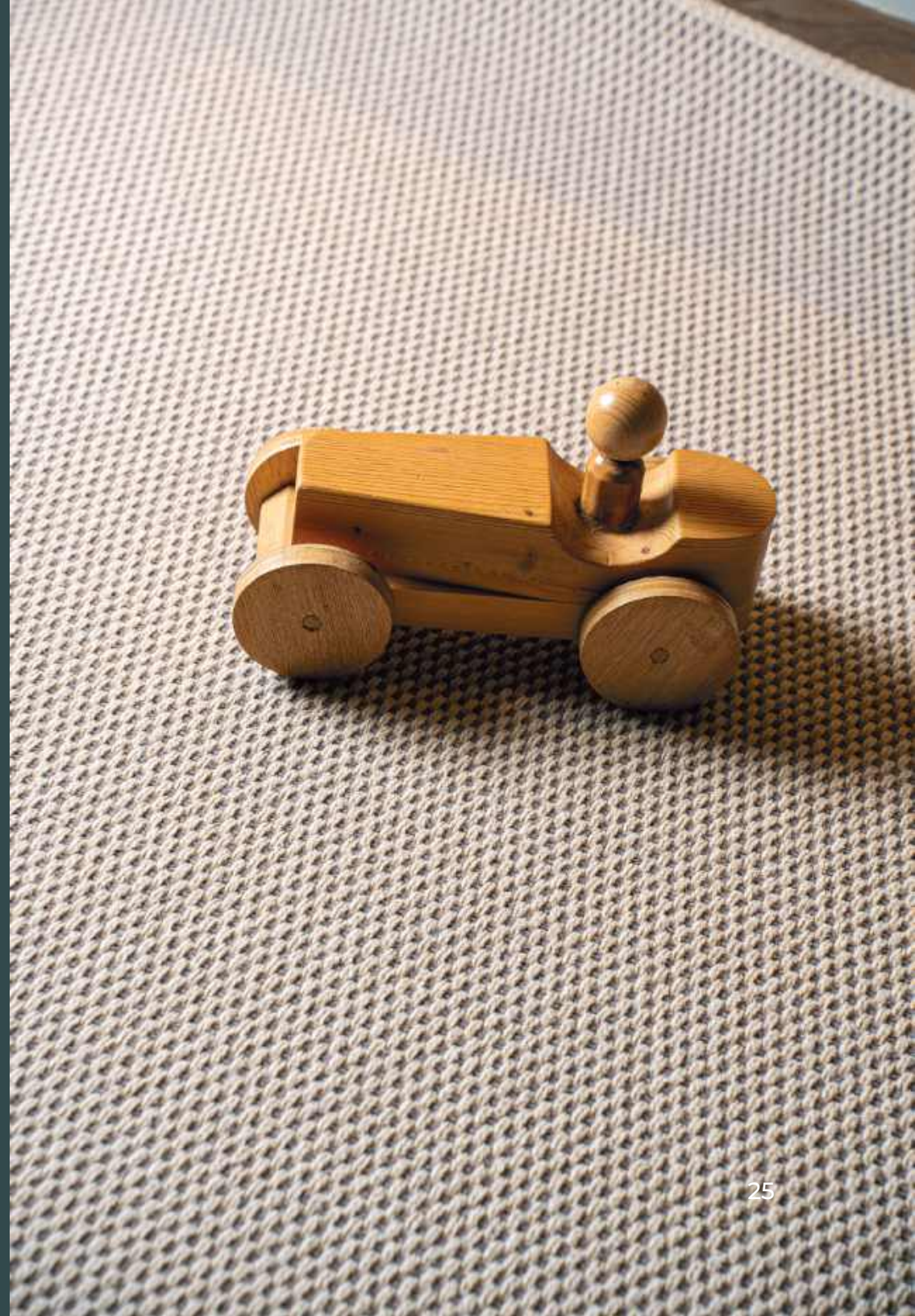
BACKING
Waterproof latex



ELIZABETH

Brown - E400E0203





ELIZABETH

White - E400E0102





ELIZABETH

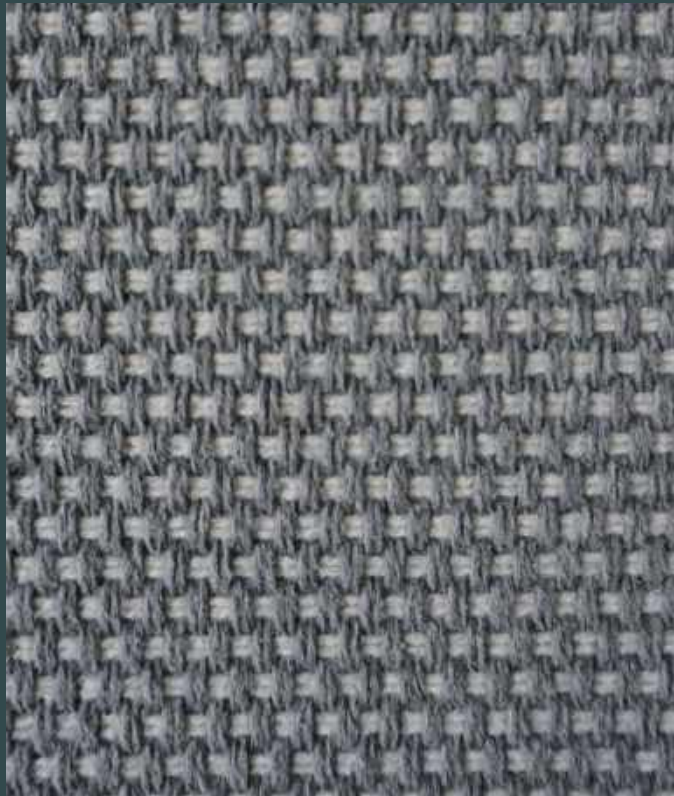
Dark Grey - E400E0605





ELIZABETH

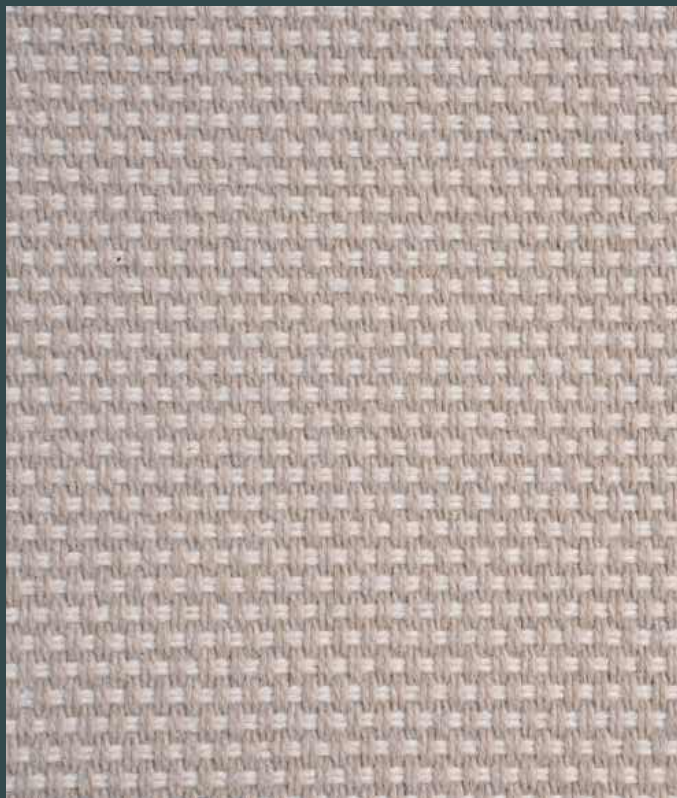
Light Grey - E400E0601





ELIZABETH

Beige - E400E0201





ELIZABETH

White Brown - E400E0103





SPECIFICATIONS



Made out of 100% recycled pet yarn material and made in Belgium



Production 4m and every size or shape



Suitable for stairs



Suitable for chairs with wheels



Dimensional stability and easy to clean



Suitable for floorheating, fire classification CFL-s1



Waterresistant, indoor and outdoor use



Suitable for pool areas: grey scale rating: 5 (excellent)



Finished with matching yarn or board



Classification 23/33; suitable for heavy domestic and commercial use (hotels,office)



UV treated +1000h

" Each carpet can be custom-finished to meet your specifications. The maximum width is 4 meters, and any shape is possible. We provide precision finishing down to the centimeter. Additionally, there is the option to finish with either yarn or an edge binding, depending on your preference."

TECHNICAL INFORMATION:

MANUFACTURING METHOD
FLATWOVEN

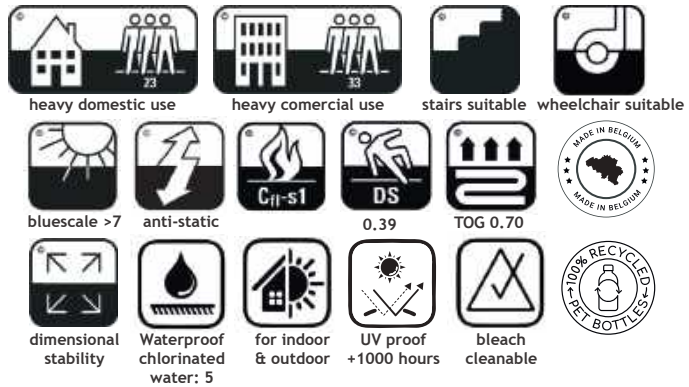
MANUFACTURING WIDTH
4,00 m

PILE COMPOSITION
100% recycled PET (indoor/outdoor use)

TOTAL THICKNESS
+ - 4.4mm

TOTAL CARPET WEIGHT
+- 2050g/m²

BACKING
Waterproof latex



ELIZABETH

Brown - E400E0203



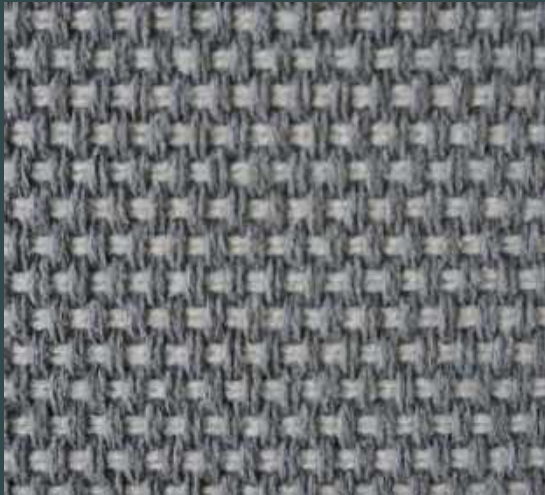
White - E400E0102



Dark Grey - E400E0605



Light Grey - E400E0601



Beige - E400E0201

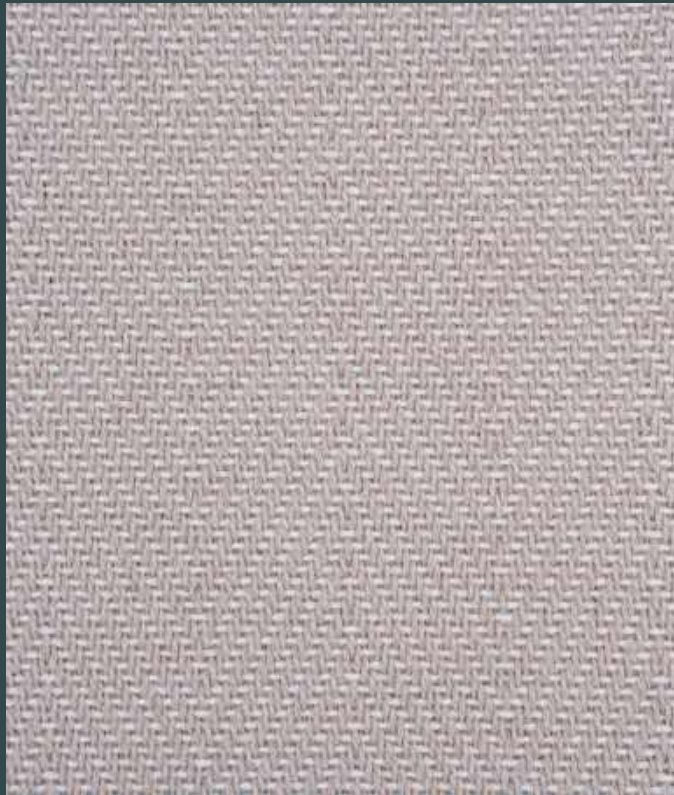


White Brown - E400E0103



VICTORIA

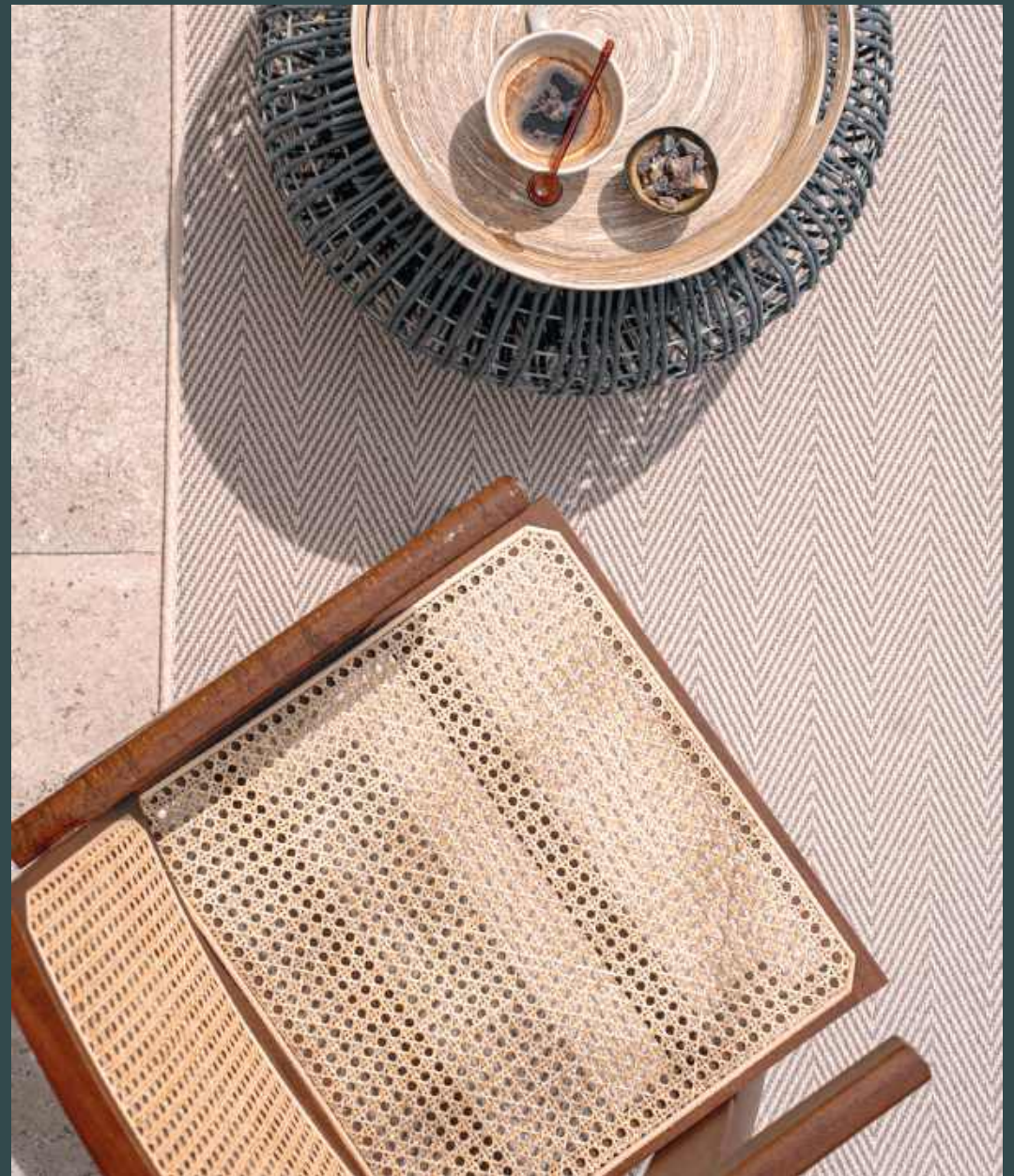
Beige - E100E0201





VICTORIA

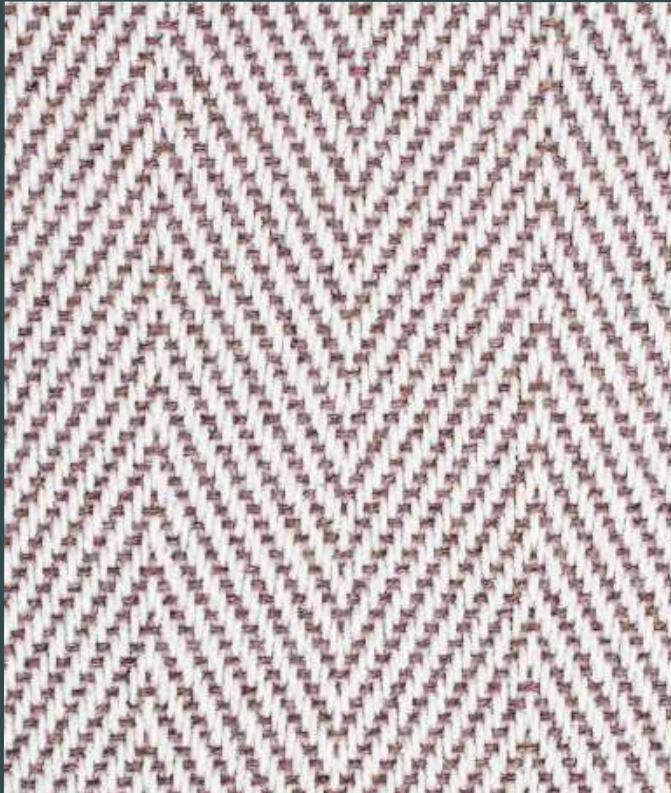
Brown - E100E0203





VICTORIA

White - Brown - E100E0103





VICTORIA

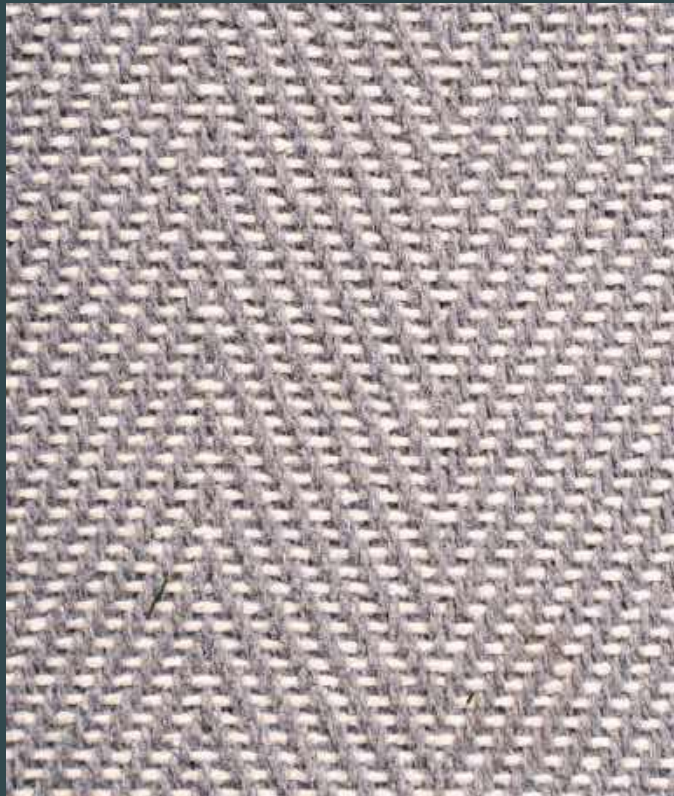
Dark Grey - E100E0605





VICTORIA

Light Grey - E100E0601





VICTORIA

Blue - E100E0401





VICTORIA

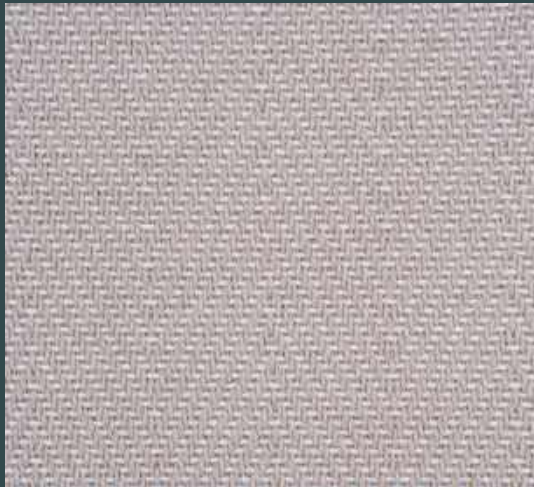
White - E100E0102





VICTORIA

Beige - E100E0201



Brown - E100E0203



White - Brown - E100E0103



Dark Grey - E100E0605



Light Grey - E100E0601



Blue - E100E0401



White - E100E0102



SPECIFICATIONS



Made out of 100% recycled pet yarn material and made in Belgium



Suitable for stairs



Dimensional stability and easy to clean



Waterresistant, indoor and outdoor use



Finished with matching yarn or board



UV treated +1000h



Production 4m and every size or shape



Suitable for chairs with wheels



Suitable for floorheating, fire classification CFL-s1



Suitable for pool areas: grey scale rating: 5 (excellent)



Classification 23/33; suitable for heavy domestic and commercial use (hotels,office)

" Each carpet can be custom-finished to meet your specifications. The maximum width is 4 meters, and any shape is possible. We provide precision finishing down to the centimeter. Additionally, there is the option to finish with either yarn or an edge binding, depending on your preference."

TECHNICAL INFORMATION:

MANUFACTURING METHOD
FLATWOVEN

MANUFACTURING WIDTH
4,00 m

PILE COMPOSITION
100% recycled PET (indoor/outdoor use)

TOTAL THICKNESS
+ - 4.4mm

TOTAL CARPET WEIGHT
2050g/m²

BACKING
Waterproof latex



heavy domestic use



heavy commercial use



stairs suitable



wheelchair suitable



bluescale >7



anti-static



Cfl-s1



DS



TOG 0.70



MADE IN BELGIUM
MADE IN BELGIUM



dimensional
stability



Waterproof
chlorinated
water: 5



for indoor
& outdoor



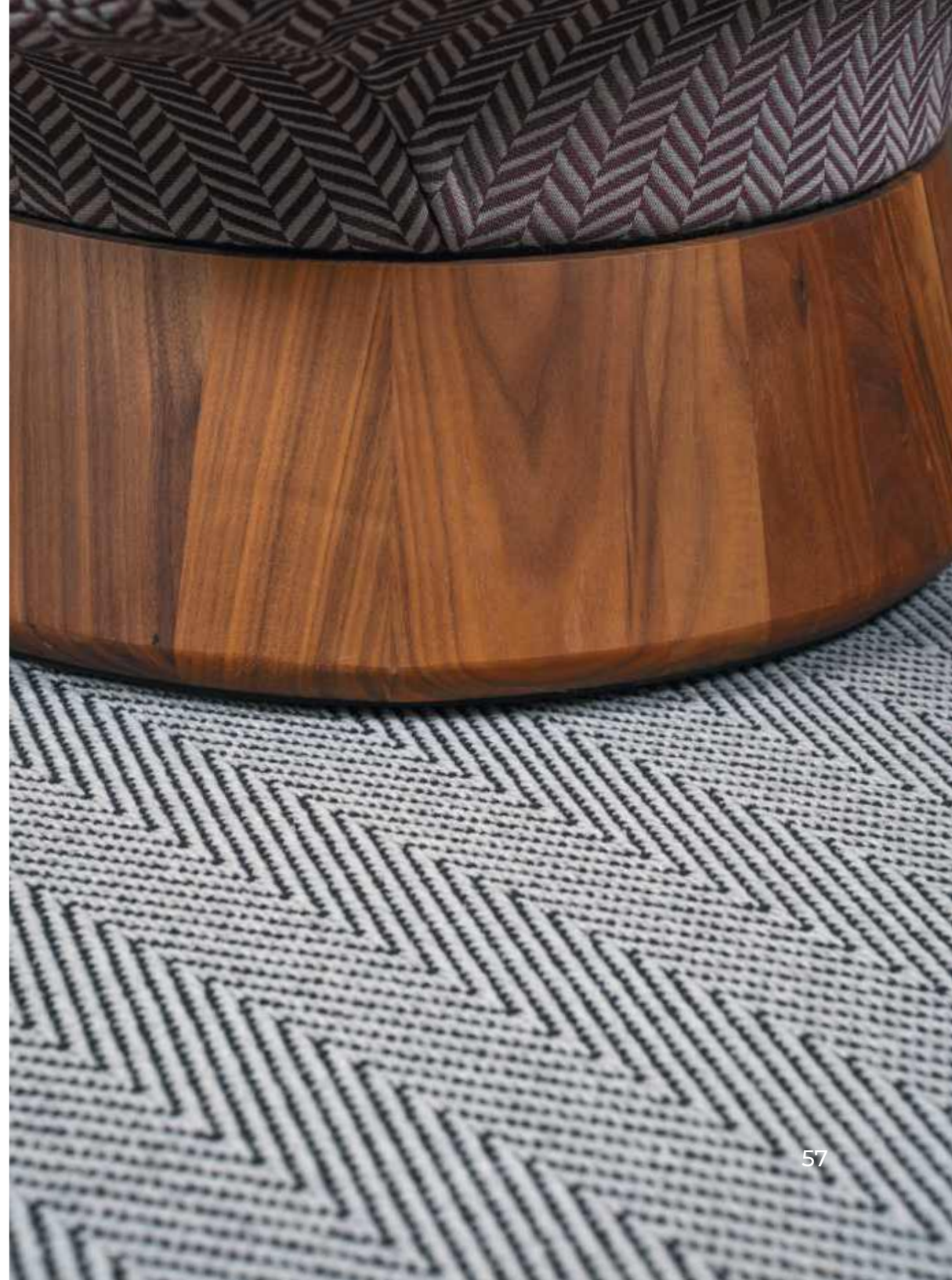
UV proof
+1000 hours



bleach
cleanable



100% RECYCLED
PET BOTTLES



MAXIMA

Dark Grey - E300E0605





MAXIMA

Light Grey - E300E0601





MAXIMA

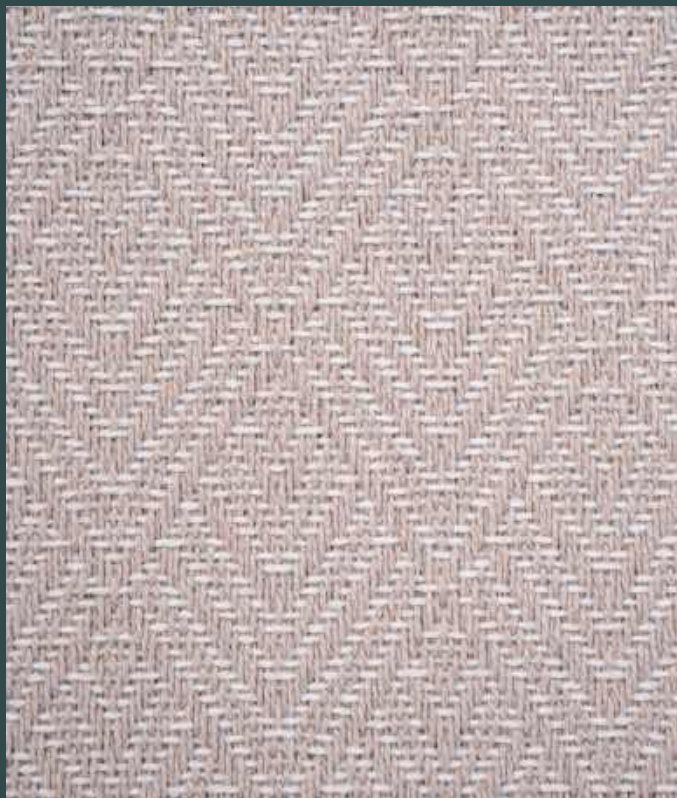
Blue - E300E0401





MAXIMA

Beige - E300E0201





MAXIMA

White Brown - E300E0103





MAXIMA

White - E300E0102





MAXIMA

Brown - E300E0203



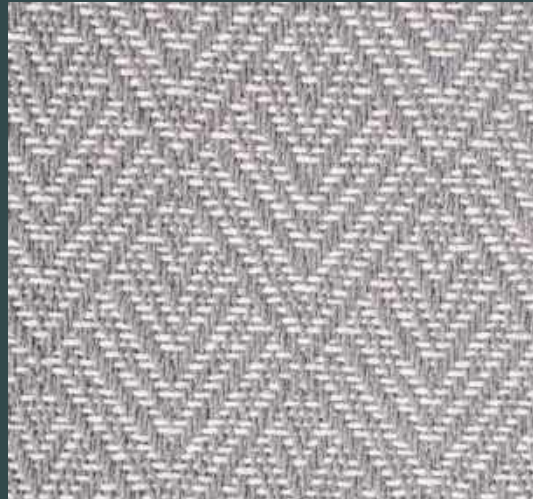


MAXIMA

Dark Grey - E300E0605



Light Grey - E300E0601



Blue - E300E0401



Beige - E300E0201



White Brown - E300E0103



White - E300E0102



Brown - E300E0203



SPECIFICATIONS



Made out of 100% recycled pet yarn material and made in Belgium



Suitable for stairs



Dimensional stability and easy to clean



Waterresistant, indoor and outdoor use



Finished with matching yarn or board



UV treated +1000h



Production 4m and every size or shape



Suitable for chairs with wheels



Suitable for floorheating, fire classification CFL-s1



Suitable for pool areas: grey scale rating: 5 (excellent)



Classification 23/33; suitable for heavy domestic and commercial use (hotels,office)

" Each carpet can be custom-finished to meet your specifications. The maximum width is 4 meters, and any shape is possible. We provide precision finishing down to the centimeter. Additionally, there is the option to finish with either yarn or an edge binding, depending on your preference."